

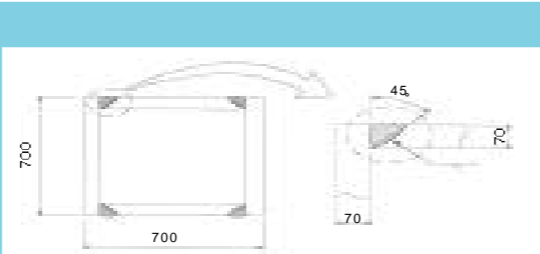
# Joint

|  
| 031-919-6482/4  
| E-mail: woongsik@ssyenc.co.kr

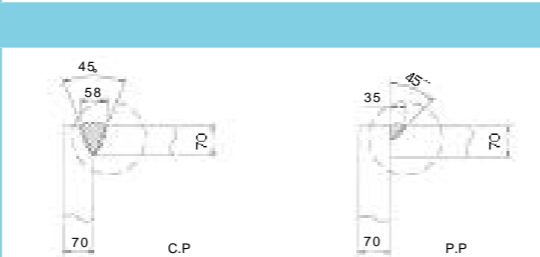
- 1.
- 1-1.
- : 2000. 9. 26 ~ 2003. 9. 26(36 )
  - : 284,801m<sup>2</sup> (86,152 )
  - : 26,744.81m<sup>2</sup> (8,090.3 )
  - : 60,460.63m<sup>2</sup> (18,289.3 )
  - : R.C + STEEL + STEEL PIPE ROOF TRUSS  
+P.T.F.E MEMBRANE
- 1-2.
- Stand Raker Beam P.C 가
- Stand Part K/S , Roof Truss Part 가
- British Standard 가
- Fast Track 가
- 1-3.
- 1) Fast Track 가
- 2) B/S CODE KS/AWS CODE 가

## 2.

### 2-1. Box Column

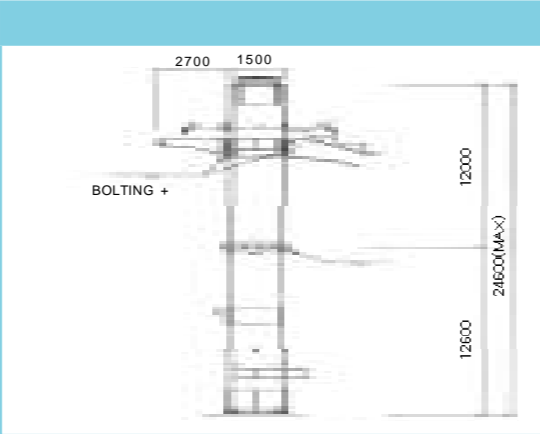


Box Column Size : 700x700x70- Length 8~9m  
Built-up Complete Penetration  
Box Column 가 가 가 가 가

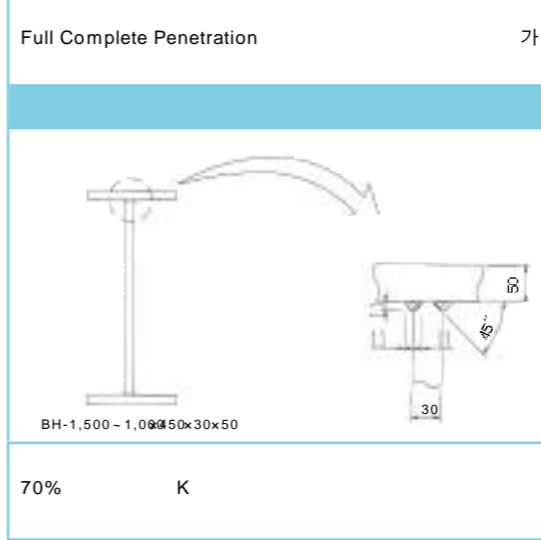
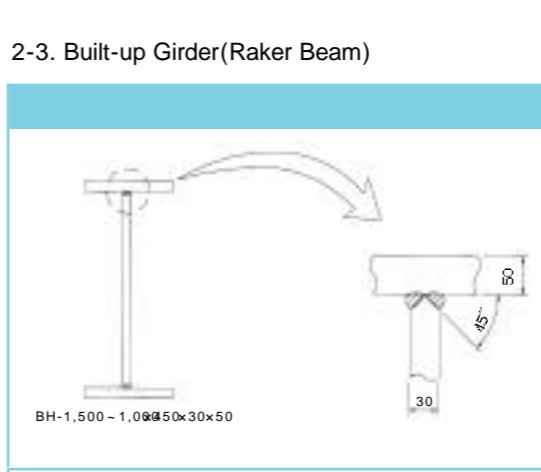
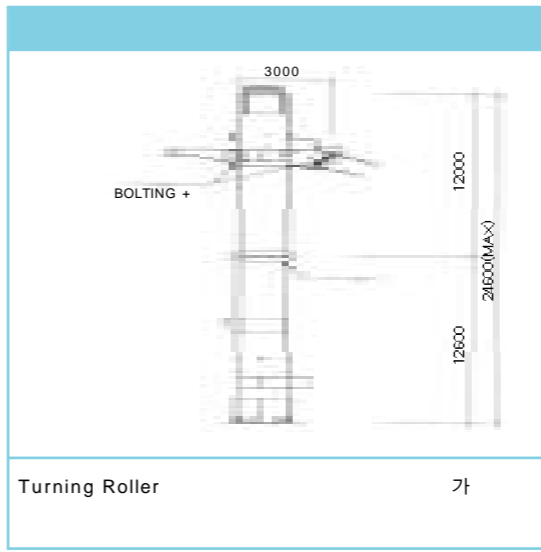


Diaphragm (General Zone) 50%  
Partial Penetration Bracket Diaphragm  
(Panel Zone) Complete Penetration

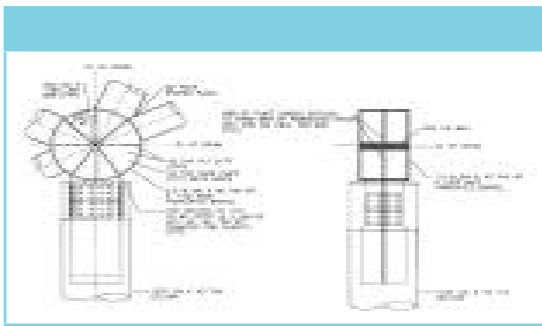
### 2-2. Pipe Column



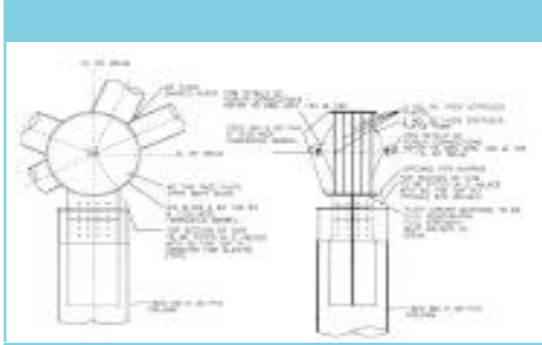
24.6m ~ 19.2m 1500x40, 1000x40 Column  
Pipe 가 18m 가



### 2-4. Drum Stiffener

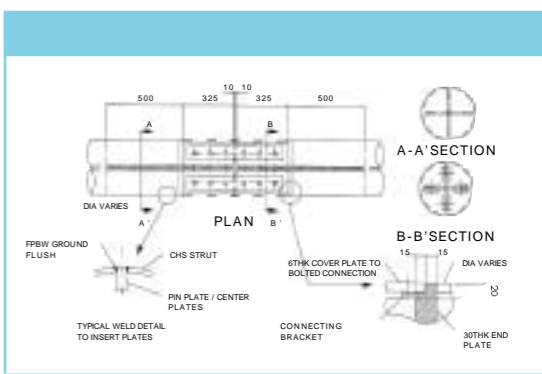


Round Bar ( 200-Length 1100 )  
Billet 가  
8 Stiffener

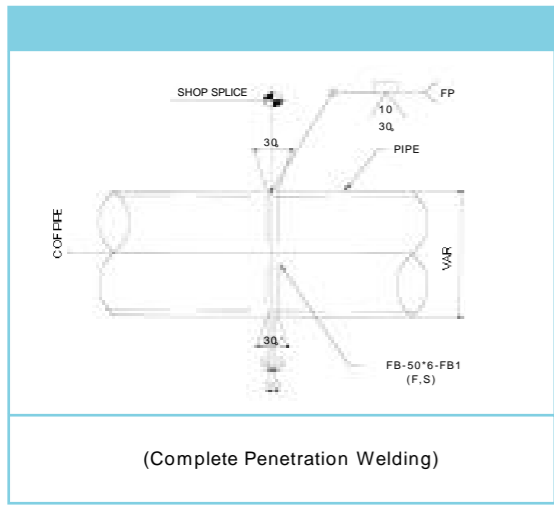


Round Bar 40t-3 Disk Type  
Stiffener Center Disk K , Disk V

### 2-5. Truss Pipe Joint



Round Cover Plate Bolting + Gusset Plate  
Pipe Mill 가  
Bolting + Welding Pipe Joint 가



2-6. ( )

Mill 1 (80ton)  
( 125 )

LOSS  
Option (Roof Truss 耐  
Lamination(Z 35 Grade) ( 1364ton)

1 7  
(SPS500, SPS 490, SWS490YB, SWS490B,  
SWS400A, SPS400, SS400)  
Drum Shell 耐Lamination ( 3 8ton)

3. \_\_\_\_\_

가 9.5  
105  
가  
가

ITEM	
Box Column	( 50%) 가 (U.T) 50% P.P M.T(10%) 가 가 338 , 105
Pipe Column	30% JIG , Shelter 가 14 , 5
Built-up Girder (Raker Beam)	가 가 131 , 44
Drum Stiffener	Round Bar Drum 가 35 , 24
Truss Pipe Joint	가 Hole 가 가 가 255 , 98
( )	: 가 172

TRUSS British Standard  
Engineering  
KNOW-HOW 가

1  
02-424-6051  
E-mail: pdcs33@ssyenc.co.kr

1. \_\_\_\_\_

1-1. 2  
50m, 330m,

2. \_\_\_\_\_

- 가 - 가 - ( , ) 가	- 가
- 가 - 가	- 가 - 가
- 가	- 가

(I.L.M) , 7 P.S.C Box  
Girder  
ILM 1  
(Steel Nose) ( )  
( ) 가  
1-2.  
1)  
2)  
3) 가 ,

3. \_\_\_\_\_

가12

가  
가

가

- 가: 5,600 / m <sup>3</sup> (가) - 82,080 m <sup>3</sup> ×5,600 / m <sup>3</sup> = 4.6 - System Support 3.5 가	- 가: 146,000 / m - 960m×146,000 / m = 1.4
- 3.2 -> 가 - ; 600	
- 1Lin×10 /10 = 10 / - 10 ×8 = 80 - : 800	- 1Lin×3 /6 = 4 / - 4 ×8 = 32 - : 192
- 48 -> 가 - : 600	

## Prestress Beam

가 ( )

| 02-487-2532/3  
| E-mail: jscho@ssyenc.co.kr

1. \_\_\_\_\_

1-1.

SLURRY WALL + STRUT

가

가

가

1-2.

가

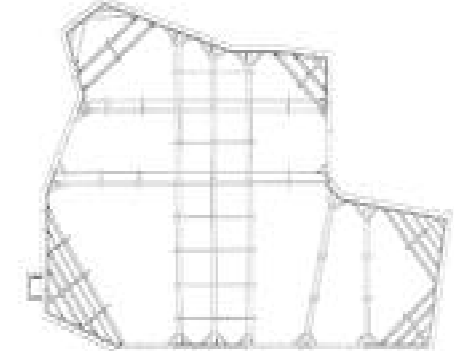
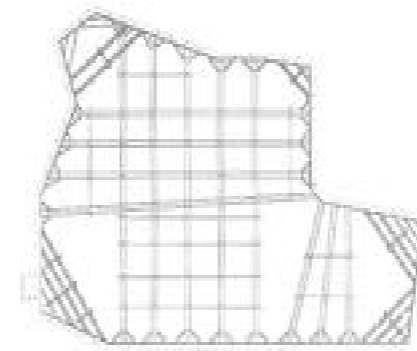
STRUT

가

2. \_\_\_\_\_

3. \_\_\_\_\_

, 가 ,



-  
-  
- STRUT, POST PILE  
-

-  
- 가  
-  
-

가 - 2 8 가 가

가

- 가 : 15  
가 : 5

- 가 : 12  
가 : 4

- STRUT 가